

Chevy Ls Sport Track

Kits 19915-08 & 19915-09

Alternator & Power Steering Bracket 19901-08 & 19901-09

1-19901-A(08 or 09) front main bracket alt & p/s
1-19901-B(08 or 09) alt rear support bracket
1-19901-C(08 or 09) alt bracket spacer block
1-P761..... ribbed idler pulley
1-P762..... non ribbed idler pulley
1-AC7-.200..... 7/16 id x .200" spacer
4-AC7-.700..... 7/16 id x .700" spacer (truck only)
1-TP7-1.525..... 7/16 id x 1.525" spacer
3-TP7-2.300..... 7/16 id x 2.300" spacer
1-S166..... 5/16-18 x 3.5" shcs
2-S322..... 3/8-16 x 1.5" hex head
1-S453..... 5/8-18 x .850" threaded bushing
3-S551..... m8-1.25 x 25mm shcs
4-S562..... m10-1.5 x 80mm shcs (Corvette)
4-S574..... m10-1.5 x 100mm shcs (Camaro)
4-S575..... m10-1.5 x 120mm shcs (Truck)
1-S616..... 5/16-18 lock nut
2-S660..... 5/16 washer
2-S666..... 3/8 washer

Air Conditioning bracket 19902-08 & 19902-09

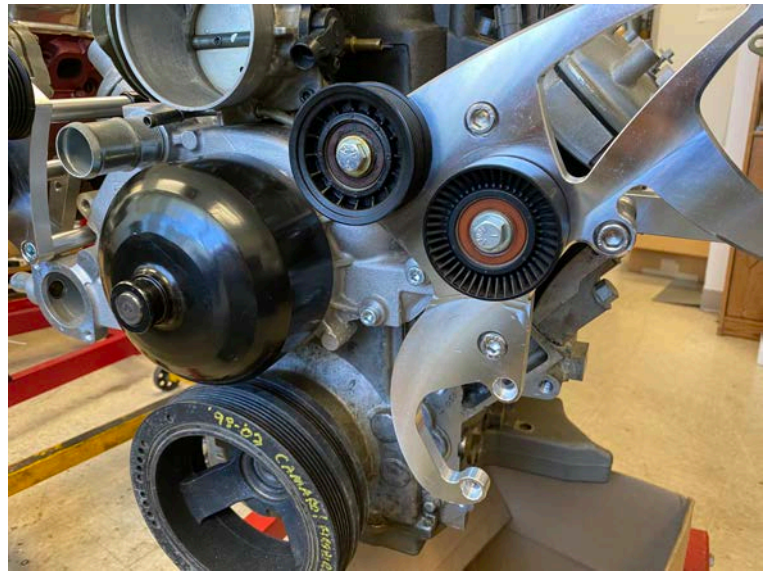
1-19902-A (08 or 09) front main a/c bracket
1-19902-B (08 or 09) a/c rear support bracket
1-19902-C (08 or 09) a/c spacer block
1-P758..... tensioner with pulley
1-P761..... ribbed idler pulley
1-AC7-.312..... 7/16 id x .312 spacer
3-AC7-.700..... 7/16 id x .700" spacer (truck only)
1-TP7-2.300..... 7/16 id x 2.300" spacer
2-TP7-3.250..... 7/16 id x 3.250" spacer
1-S162..... 5/16-18 x 3" shcs
1-S213..... 5/16-18 x 1.5" hex head
1-S322..... 3/8-16 x 1.5" hex head
2-S551..... m8-1.25 x 25mm shcs
3-S568..... m10-1.5 x 140mm shcs (truck)
3-S574..... m10-1.5 x 100mm shcs (Corvette)
3-S575..... m10-1.5 x 120mm shcs (Camaro)
2-S616..... 5/16-18 lock nut
4-S660..... 5/16 washer
1-S666..... 3/8 washer

Accessories

1-P581.....Alternator
1-P425..... a/c compressor
1-P313.....type 2 remote p/s pump
1-653-08..power steering pulley
 3-S144..5/16-18 x .875" shcs
1-P419.....a/c manifold
 2-S550..m8-1.25 x 20mm shcs

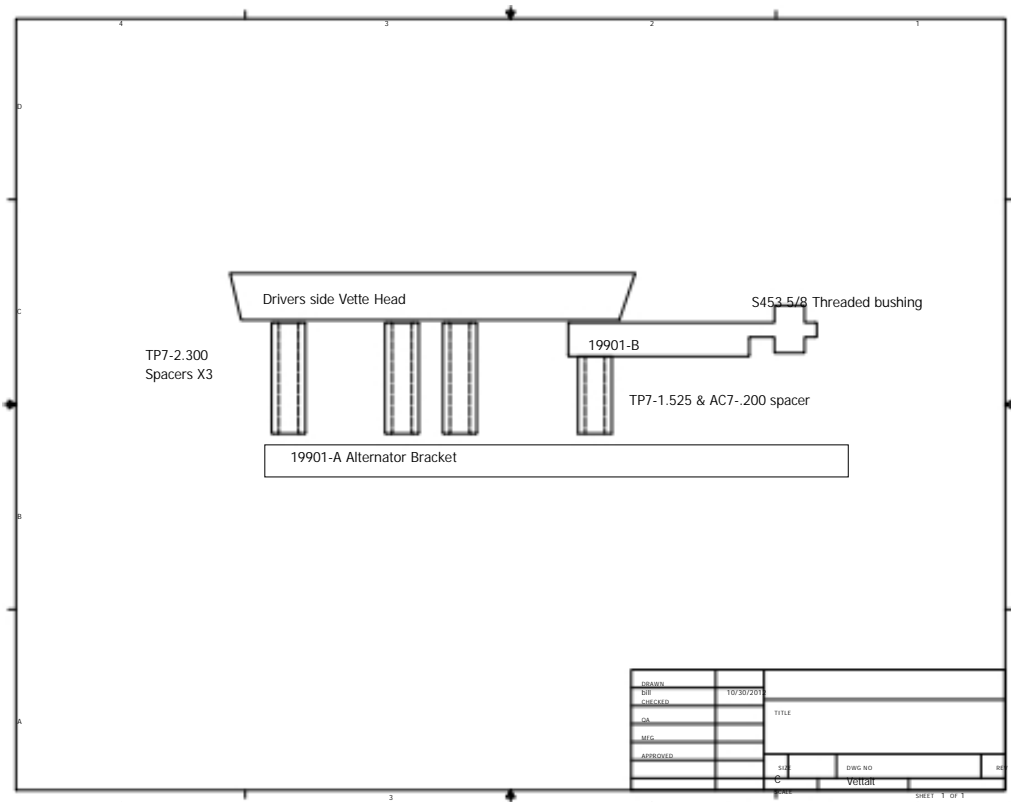
Step 1

Install alternator bracket (19901-A) with m10 x 1.5 shcs per water pump and balancer offset of your engine. Corvette, Camaro and Truck. See below drawings for your offset and then add the two Idlers (P761) ribbed to the upper mounting hole and (P762) non ribbed to the lower mounting hole bracket using two (S322) 3/8-16 x 1.5" hex bolts and two (S666) 3/8 washers.



Corvette offset alternator bracket. (OVERHEAD VIEW)

Mount the (19901-A) alternator bracket to the head using three (TP7-2.300) spacers and four (S562) m10-1.5 x 80mm shcs. In the outer hole use the (TP7-1.525) spacer and a AC7-.200 spacer with (19901-B) rear support bracket as shown. Insert the (S453) 5/8-18 threaded spacer into the rear support bracket.



Step 2

Install the alternator (P581) to the alternator bracket. In the upper hole use a M8 x 25mm SHCS (S551) . In the lower mounting hole use a 5/16 x 3-1/2” ” shcs (S166). Install bolt thru the front bracket then thru the alternator making sure the rear adjuster screw is threaded forward to where it is contacting on the back of the alternator ear. Secure with a (S660) 5/16 washer and a (616) 5/16 lock nut.



Top view outer head bolt Alternator bracket . With rear support shown TP7-.1.525 spacer stacked with a AC7-.200 Spacer. Then the rear support.



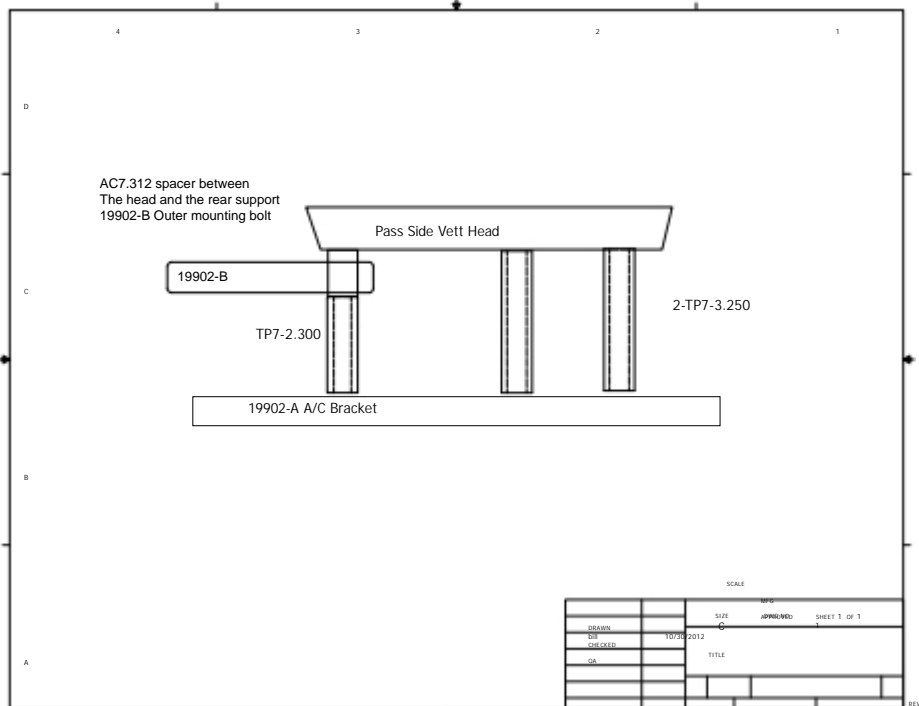
TOP VIEW A/C bracket use .2300 Spacer then rear support then.312 spacer

Step 3

Install a/c bracket (19902-A) Use M10 x 1.5 shcs per water pump and balancer offset of your engine. Corvette, Camaro and Truck. See lower offset descriptions for proper length spacers and hardware.

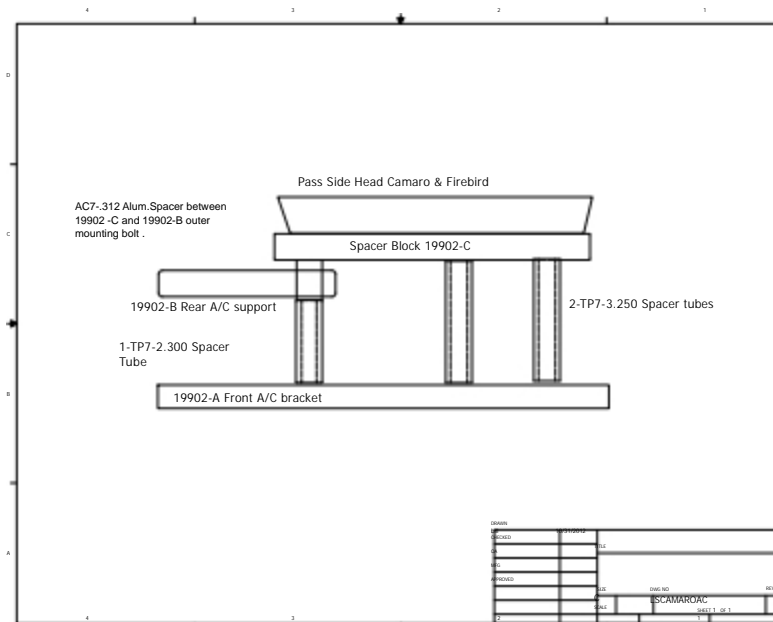
Corvette offset a/c bracket

Install the front a/c bracket (19902-A) to the head. The two inner bolts will be (S574) M10 x 100mm shcs. Use two (TP7-3.250) spacers between the bracket and the head. The outer hole will use a (TP7-2.300) spacer with rear a/c support bracket (19902-B) and a (AC7-.312) spacer between the head. Secure with a (S574) M10 x 100mm shcs .



Camaro offset a/c bracket

Start with the spacer block (19902-C) mounting to the head. Then use two (TP7-3.250) spacer in between the two inner mounting holes. On the outside install a (AC7-.312) spacer between the rear spacer block and the rear support (19902-B), and add the (TP7-2.300) spacer with the front a/c bracket (19902-A) and secure all three points using three M10-1.5 x 120mm SHCS (S575) as shown.



Truck offset a/c bracket

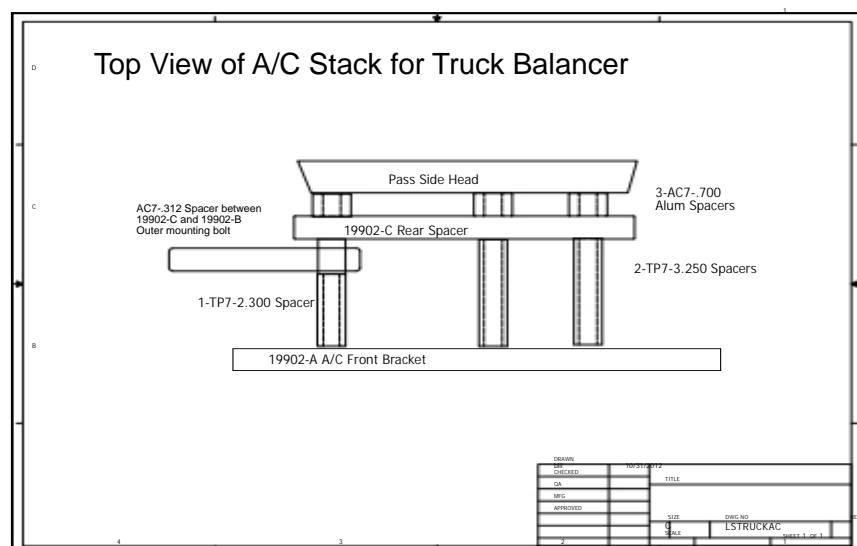
Start with the three (AC7-.700) spacers then stack the rear spacer block (19902-C) with two (TP7-3.250) spacers to the two inside mounting holes. On the outside install a (AC7-.312) spacer between the rear spacer block and the rear support (19902-B), and add the (TP7-2.300) spacer with the front a/c bracket (19902-A) and secure all three points using three (S568) M10-1.5 x 140mm SHCS.

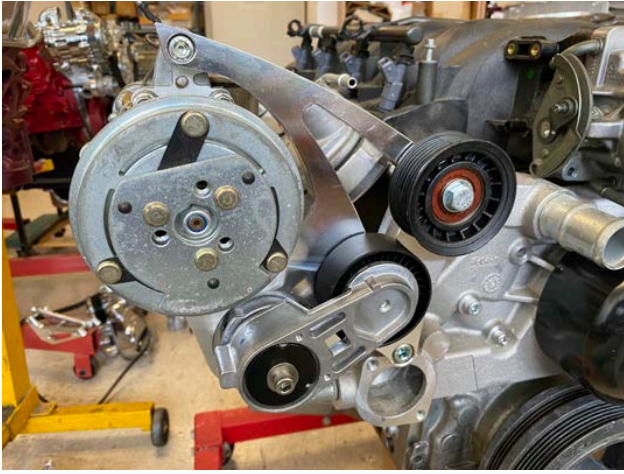
AC7-.312 Spacer
Behind Rear A/C
support



TOP VIEW

All 3 styles of balancer
Will use the 2.300 Spacer
and the .312 spacer



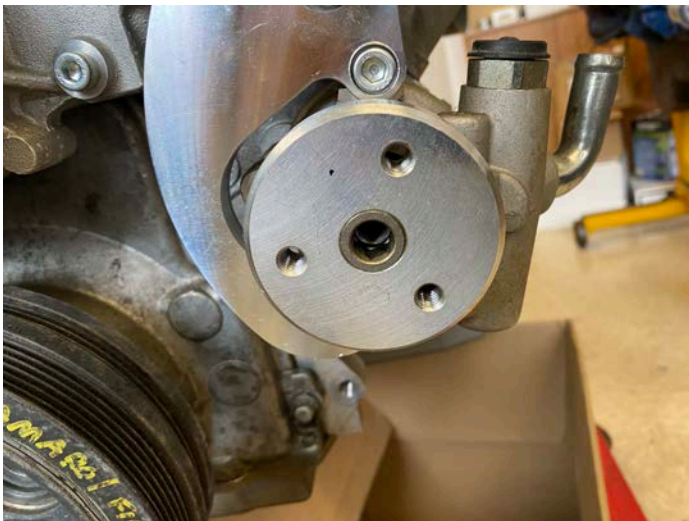
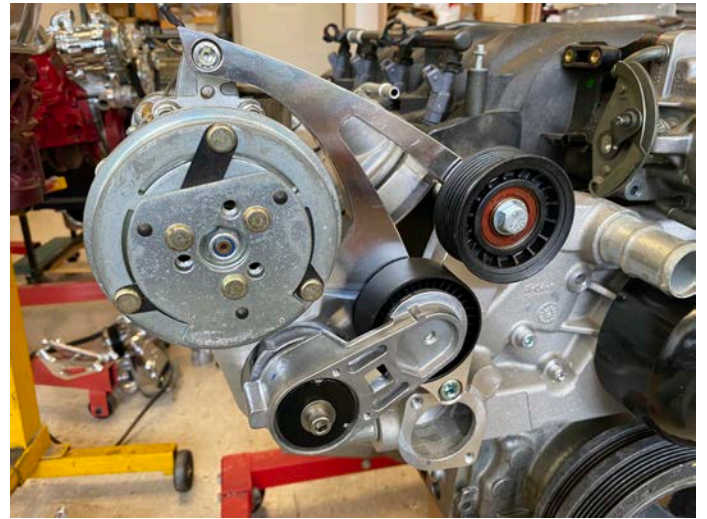


Step 4

Install the a/c compressor (P425) to the rear side of the a/c bracket using two (S551) M8 x 25mm shcs. Attach the rear a/c support bracket (19902-B) to the a/c lower ear using a (S213) 5/16 x 1-1/2 " hex bolt and two (S660) 5/16 washers and a (S616) 5/16 lock nut. Now add a Ribbed idler (P761) to the upper tapped hole of the a/c bracket using a (S322) 3/8 x 1-1/2" hex bolt and a (S666) 3/8 washer.

Step 5

Install the belt tensioner. (P758) to the a/c bracket. Use the center locator holes for the belt tensioner. Use A 5/16 X 3" SHCS (S162) with a (S660) 5/16 washer. Install it thru the tensioner and the bracket. Secure from the back with a (S660) 5/16 washer and a (S616) 5/16 lock nut.



Step 6

Mount the power steering pump (P315) to the two lower holes of the alternator bracket. Use two (S551) M8 x 25mm shcs. Adjustments to the hub may be necessary for alignment.

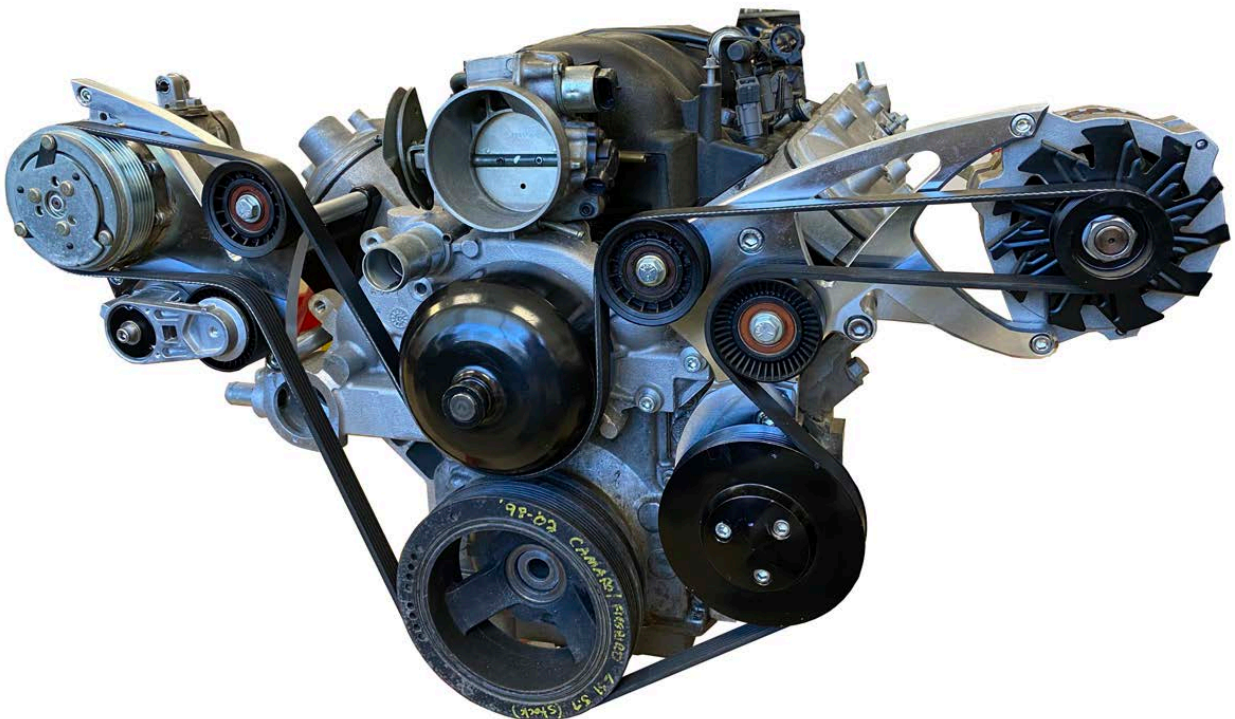
Step 7

Install the power steering pump pulley (653-A) to the hub. Use three (S144) 5/16 x 7/8 shcs. NOTE: Make sure your power steering pulley lines up with the crank pulley. Use a straight edge from the crank to the power steering. Make sure the first groove lines up on both. If not adjust the hub as necessary.



Step 8

Install the belt 101-1/2" 6 Rib belt. We recommend Dayco # 5061015. Use a 1/2 Ratchet rotating the belt tensioner clockwise and install the belt. Non Power steering will use a 97" six rib belt Dayco 5060970. Route belt as shown.



LIMITED WARRANTY

March Performance warrants to the original retail purchaser that for a period of ninety (90) days from the date of purchase, March Performance will repair or replace, at their option, any Product, which is found to be defective in material or workmanship.

Exclusions from Warranty Coverage

March Performance does not warrant any Product that is damaged from abuse, misuse or misapplication or not used for its intended purposes.

This Limited Warranty does not cover or apply to any damage or loss sustained to the engine or any other parts which may have been caused by the defective Product and does not cover or apply to any personal injury, labor charges or any other incidental costs for damages caused by the defective Product. THIS IS THE ONLY EXPRESS WARRANTY GIVEN WITH RESPECT TO YOUR PRODUCT. ALL OTHER EXPRESS WARRANTIES, GUARANTEES, OR STATEMENTS REGARDING THE PRODUCT, WHETHER WRITTEN OR VERBAL, ARE HEREBY DEEMED NULL AND VOID AND OF NO EFFECT.

Normal wear and tear and damage to the Product not caused by March Performance are also excluded from this Warranty.

DISCLAIMER OF OTHER WARRANTIES

EXCEPT TO THE EXTENT PROHIBITED BY APPLICABLE LAW, ANY IMPLIED WARRANTY WHETHER OF MERCHANTABILITY, FITNESS FOR A PARTICULAR PURPOSE, OR WARRANTY, SOME STATES DO NOT ALLOW LIMITATIONS ON HOW LONG AN IMPLIED WARRANTY WILL LAST SO THAT THE PRECEDING LIMITATION MAY NOT APPLY TO YOU.

Limitation on Remedies

REPAIR OR REPLACEMENT AS PROVIDED IN THIS WARRANTY IS YOUR EXCLUSIVE REMEDY. MARCH PERFORMANCE SHALL NOT BE LIABLE FOR ANY INCIDENTAL OR CONSEQUENTIAL DAMAGE FOR BREACH OF ANY EXPRESS OR IMPLIED WARRANTY ON THE PRODUCT. SOME STATES DO NOT ALLOW THE EXCLUSION OR LIMITATION OF INCIDENTAL OF CONSEQUENTIAL DAMAGES SO THE PROCEEDING LIMITATIO OR EXCLUSIONS MAY NOT APPLY TO YOU. YOU HAVE NO RECOURSE OR REMEDY FOR DAMAGE OR DEFECT CAUSED BY MISUSE, ABUSE OR NEGLIGENCE.

THIS WARRANTY GIVES YOU SPECIFIC RIGHTS AND YOU MAY ALSO HAVE OTHER RIGHTS, WHICH MAY VARY FROM STATE TO STATE.

Your Responsibilities:

- 1. Use and install the Product only for its intended purpose.
2. To avail yourself of this Limited Warranty, return the Product with a copy of the paid receipt, postage paid to: MARCH PERFORMANCE 16160 PERFORMANCE WAY NAPLES, FL 34110
3. When returning the Product, you must follow the directions set forth on the Warranty/Return Form on the reverse side of this Limited Warranty. If you no longer have the Warranty/Return Form, one may be obtained by contacting March Performance during normal business hours at: (888) 729-9070.
4. Shipping and/or transportation costs returning the Product to March Performance and any damage caused during shipping are your responsibility. March Performance will pay for shipping and/or transportation costs incurred in returning the Product to you.

LIMITED WARRANTY WARRANTY/RETURNS FORM

No product mounted is considered for credit unless it is a manufacturer defect.

All products returned for any reason must reference an authorization number (RGA). The RGA number is obtained by calling place of purchase during normal business hours. Any product returned without the RGA# written on the return package next to the return shipping label will be refused.

All returns must ship via UPS and be properly packaged in the original carton. Return freight charges are the responsibility of the customer unless the product was shipped in error.

March product returned after (1) year from date of purchase will not be accepted unless it is found to be a manufacturer defect. The customer must include a written statement describing the alleged product defect. The complete Limited Warranty is set forth on the reverse side.

- 100% credit issued on manufacturer defects
20% return fee on all reshelvable product
30% return fee on all repairable product

NO CREDIT WILL BE ISSUED ON RETURNED PRODUCT BEYOND REPAIR

March Performance thoroughly inspects all returns. It is the sole discretion of March Performance in determining the condition of all returned merchandise.

To receive replacements at no charge the original product must first be received and inspected by March Performance for determination. Immediate replacements may be purchased and later credited upon inspection determination.

Please Complete the Information below, detach and include with returned product.

Form fields for RGA#, CT#, Issued by, Date, Purchaser's Name, Phone, Address, Purchased Directly Through, Invoice#, Product ID, Invoice Date, Reason.

** MOUNTED PRODUCTS ARE NONREFUNDABLE **