

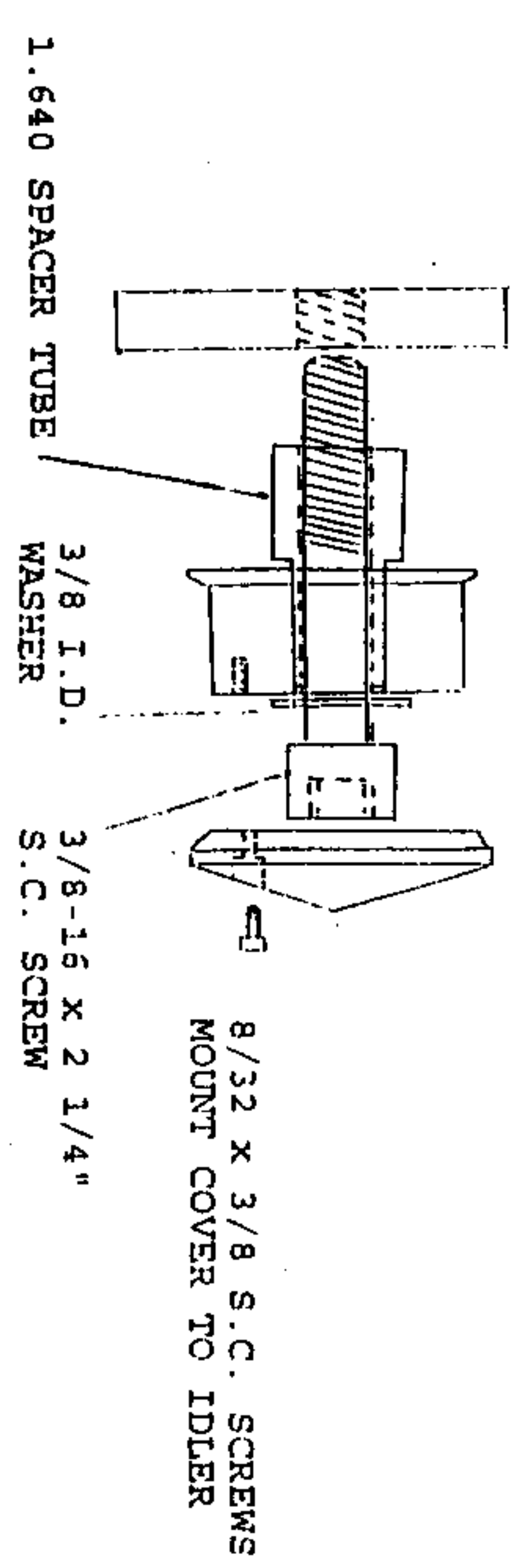
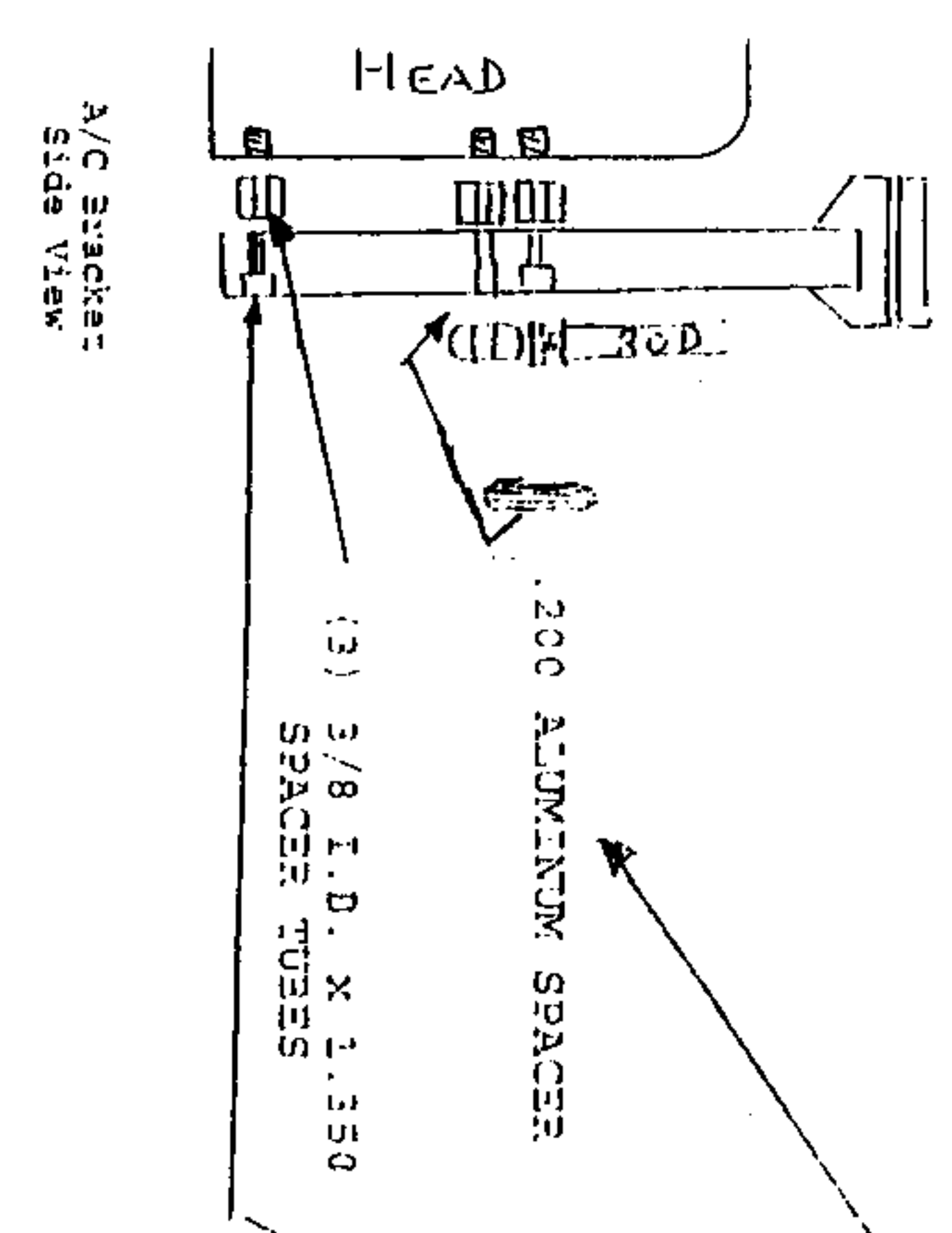
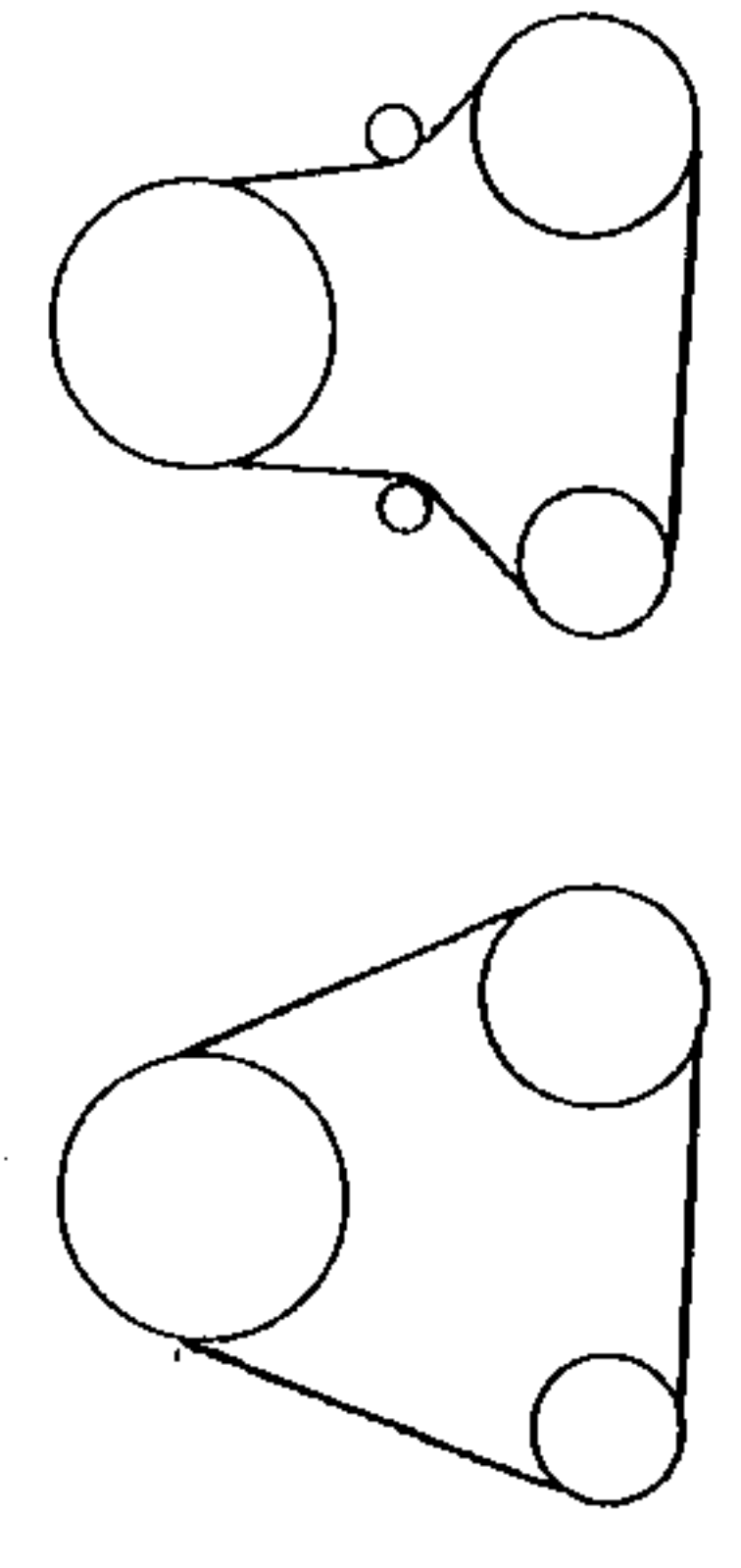
**Pt #20900 LT-1 SMALL BLOCK CHEVY
HIGH MOUNT A/C & ALT BRACKET KIT
INSTRUCTION SHEET**

- This kit requires the use of a Sanden #508 A/C pump. Other size Sanden pumps are ok if they have the same mounts and offsets to serpentine pulley.
- Begin by mounting brackets to the heads. Place spacer in between bracket and heads.
- Assemble rods with fine thread nuts and ends. Adjust rods to their minimum length.
- Bolt the 3 ½" rod to the face of bracket with 3/8 x 16 x 3 ½" bolt using Loctite torque to GM specs.
- Mount A/C unit to bracket using 3/8 x 16 x 5" socket head bolt and locknut.
- Secure 3 ½" rod to A/C unit as per side-view on diagram.
- Secure 14 ½" rod to A/C unit as per side-view on diagram. **DO NOT** put Loctite in this time.
- Mount GM alternator to bracket using 3/8 x 16 x 2 ¾" socket head bolt.
- Secure 14 ½" rod with 5/16 shoulder bolt to alternator.
- Slide 14 ½" rod off the bolt on A/C unit and tilt alternator towards A/C unit. Now web belt as per diagram.
- Push alternator with right hand away from A/C unit. Using left hand, slide rod end back on A/C bolt, then secure with locknut.
- Adjust belt tension, make adjustments with the 14 ½" rod. The 7 ½" rod centers your A/C and alternator over your valve covers. Manually adjusted belts require a run-in and re-adjusting procedure. First, tension belt to 180 lbs. Run engine for 3-5 minutes to set belt then re-tension to 120 lbs. If a tensioning gage is not available tighten belt to ¼" deflection along its longest span.
- Re-check and tighten all bolts. Periodically re-check for proper torque.

20900 HIGH MOUNT A/C AND ALTERNATOR MOUNT INSTRUCTIONS

DAYCO 5060685

BELT WITHOUT POWER STEERING
WITH OR WITHOUT IDLERS



IDLER BRACKET
IDLER PULLEY
IDLER COVER

(2) 3/8-16 X 3 1/2 S.C. SCREW .200 SPACER BETWEEN BRACKET AND ROD END
(2) 3/8-16 X 2 1/2 S.C. SCREWS MOUNT BRACKET TO HEAD
(4) 3/16 X 4 1/2 S.C. SCREWS BOTH IDLERS
(3) 3/8-16 X 1 1/2 BUTTON HEAD - YOU MUST TAP PREDRILLED HOLES IN BALANCER

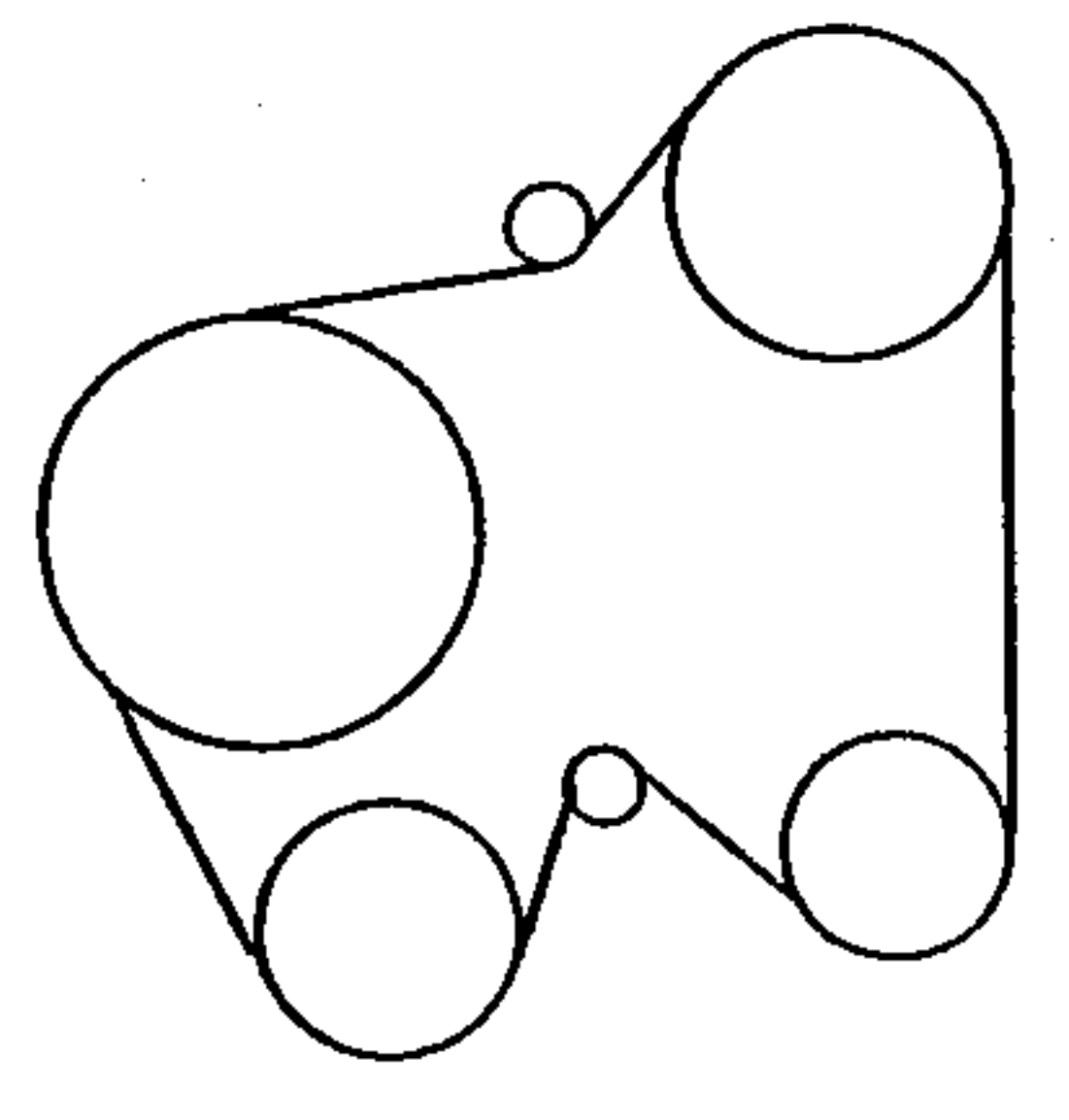
NOTE: CAMARO/FIREBIRD/IMPALA ENGINES REQUIRE #20905 SPACER BETWEEN CRANK SHAFT AND BALANCER FOR PROPER SPACING

(2) 3/8-16 X 1" S.C. SCREWS

1985 Chevy Cavalier 4 cyl. Remote Reservoir Power Steering Pump
#20185 POWER STEERING BRACKET
#619 POWER STEERING PULLEY

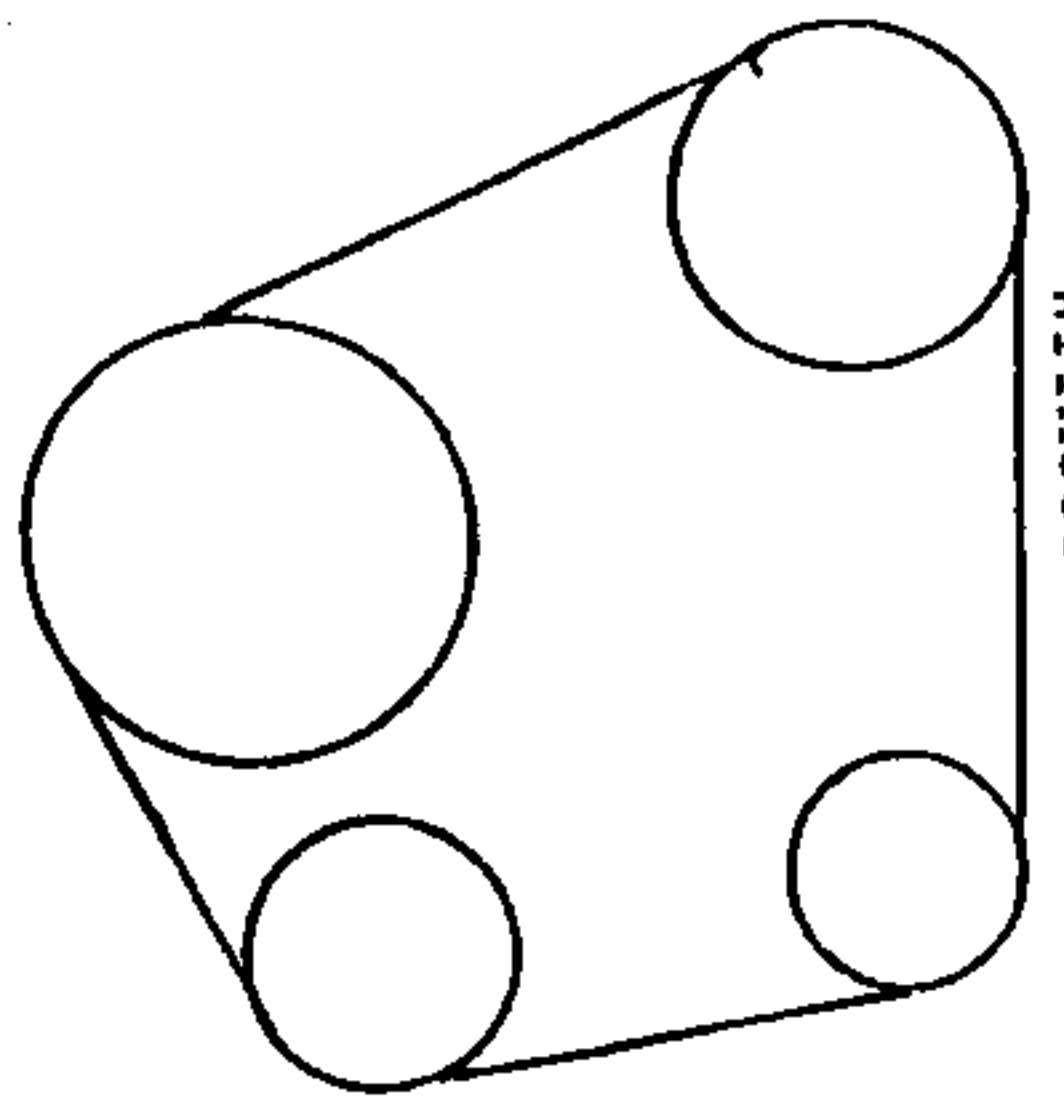
DAYCO 5060750

BELT WITH POWER STEERING WITH IDLERS



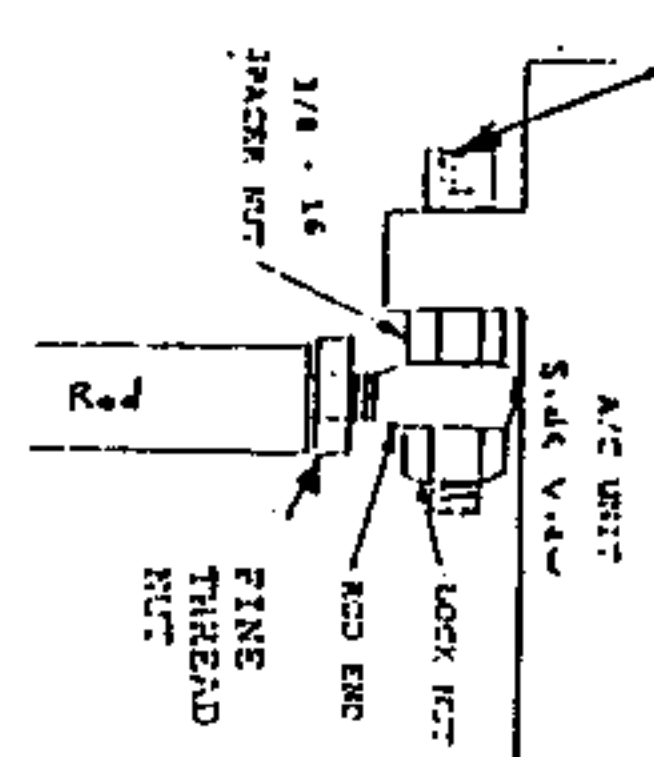
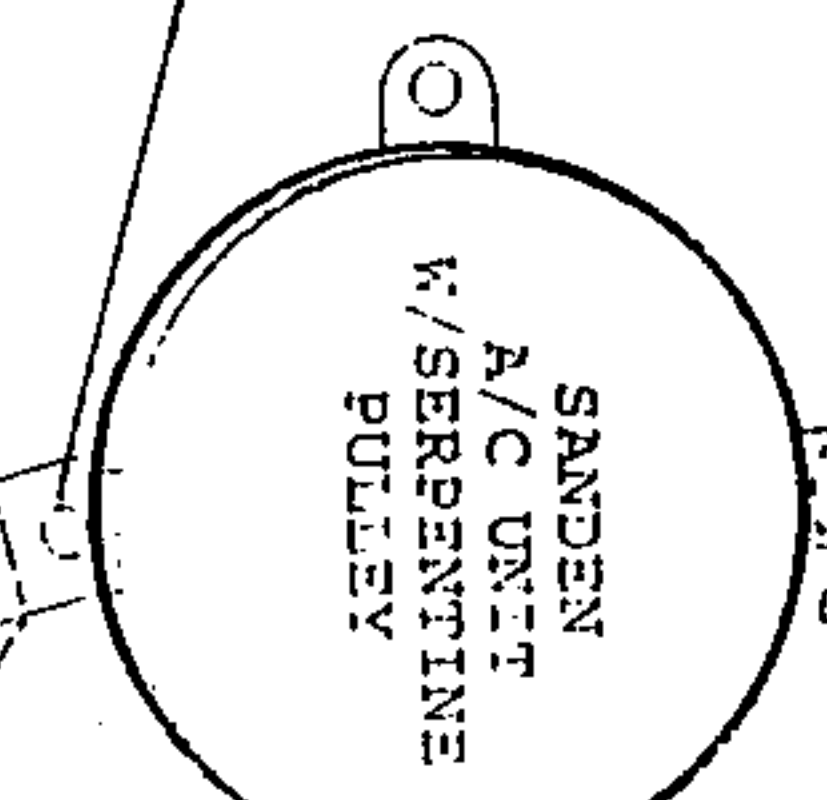
DAYCO 5060715

BELT WITH POWER STEERING WITHOUT IDLERS



3/8 - 16 X 5" S.C. SCREW WITH LOCKNUT MOUNTS A/C

14 1/2" STAINLESS STEEL ROD
3/8 - 16 X 2" S.C. SCREW TO CONNECT ROD TO A/C



3 1/2" STAINLESS STEEL ROD

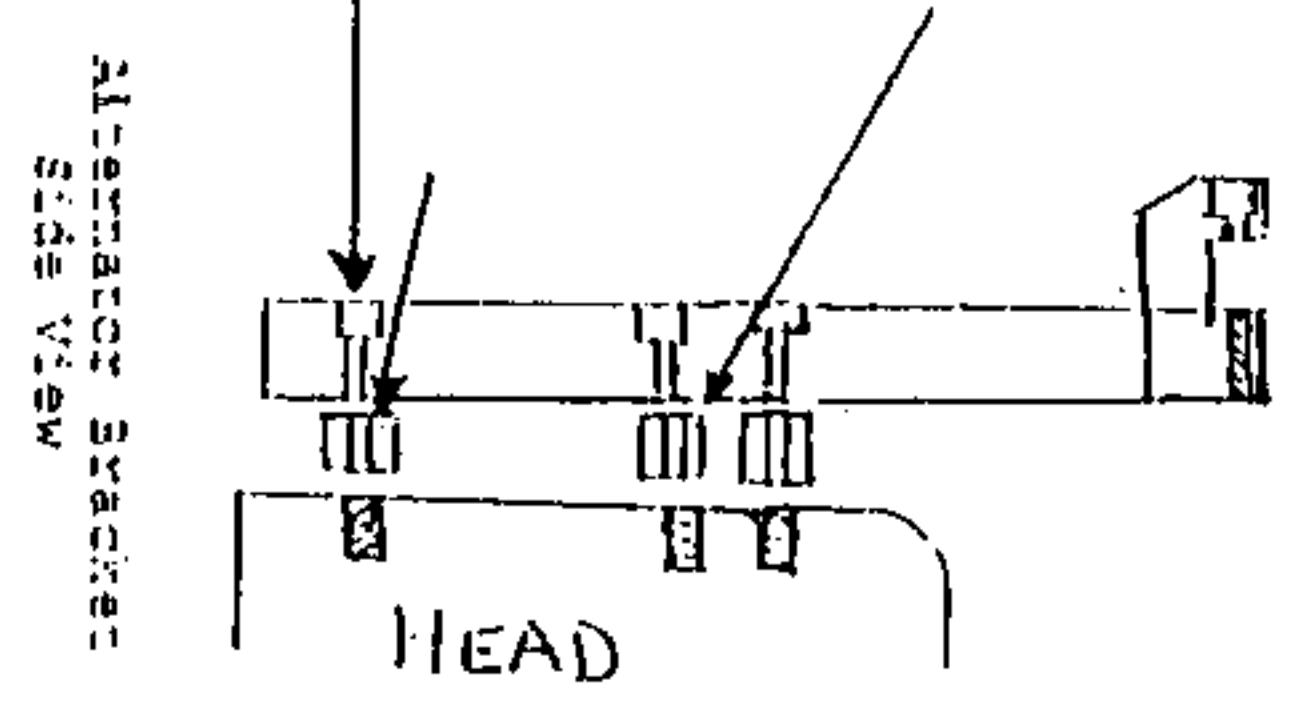
(6) M6 1.0 X 1/2" S.C. SCREWS

5/16" WITH 3/8" SHAFT SHOULDER BOLT FOR ALT
GM ALTERNATOR

Suggest Alternator (100 Amp.)
1989 Buick Skylark 4 Cyl.

3/8 - 16 X 2 3/4" S.C. SCREW MOUNTS ALT

(3) 3/8 I.D. X 1.250 SPACER TUBES



Alternator Bracket Side View