



392 HEMI KITS
ALTERNATOR & A/C & POWER STEERING
40765
NON POWER STEERING KIT
40760

Parts List

1-40761-A.....Main Alt. Bracket
1-40761-B.....Rear Support Bracket
1-40761-C.....Alt. Water Pump Adapter Bracket
4-S248.....3/8-16 x 1" SHCS
2-S345.....3/8-16 x 1-1/4" Stud
1-S339.....3/6-16 x 3" Stud
1-S7913.480 Threaded Spacer
2-S799.....5.00 Threaded Spacer
1-S771.....2.00 Threaded Spacer
1-740.....Idler Pulley
1-302-A.....Idler pulley Cover
3-S022.....8-32 x 3/8 SHCS
1-S323.....3/8-16 x 2" Hex head
1-S666.....3/8 x 3/4" Washer
1-S322.....3/8-16 x 1-1/2" Hex head
1-S450.....5/8 x 1-1/4" Threaded Insert
1-S144.....5/16-18 x 7/8 SHCS
1-S272.....3/8-16 x 3-3/4" SHCS
1-S622.....3/8-16 Lock nut

A/C Bracket

1-40762-A.....Main A/C Bracket
1-40762-B.....Rear Support Bracket
1-40762-C.....W/P Adapter Bracket
3-S248.....3/8-16 x 1" SHCS
2-S345.....3/8-16 x 1-1/4" Stud
1-S339.....3/8-16 x 3" Stud
1-S791.....3.480 Threaded Spacer
1-S799.....5.00 Threaded Spacer
1-S775.....2.720 Threaded Spacer
1-TP3-1.800...1.800 Spacer Tube
1-S268.....3/8-16 x 3-1/4" SHCS
1-740.....Idler pulley
1-302-A.....Idler cap
3-S022.....8-32 x 3/8 SHCS
1-S323.....3/8-16 x 2" Hex Head
1-S666.....3/8 x 3/4" Washer
1-S450.....5/8 x 1-1/4" Insert
2-S550.....M8 x 1.25 x 20mm SHCS
1-S217.....5/16 x 2-1/4" Hex Head
1-616.....5/16 Lock Nut

Power steering / Tensioner Bracket

1-40763-A.....Power steering bracket
(For Kit 40765)
1-40764-A.....Tensioner Bracket
(For Kit 40760)
1-713.....Adjustable Idler Assem.
2-S102.....1/4-20 x 3/4" SHCS
2-S248.....3/8-16 x 1" SHCS
1-742-A.....Idler Pulley
1-302-A.....Idler Cap
3-S022.....8-32 x 3/8 SHCS
1-S323.....3/8-16 x 2" SHCS
1-S666.....3/8 x 3/4" Washer
2-S551.....M8 x 25mm SHCS

Added Hardware

2-S260.....3/8 x 2-1/4" SHCS
2-S676.....B.B. chevy W/P Gaskets
2-S678.....Stock Hemi W/P Gaskets

Pulley Kit 40765-206

1-10381-A.....Crank Pulley
6-S144.....5/16-18 x 7/8 SHCS
1-10383-A.....Water Pump Pulley
1-314-A.....Water Pump Cap
4-S183.....5/16-24 x 5/8 SHCS
1-221-A.....Alternator Fan
1-206-A.....Alternator Pulley
1-306-A.....Alt. Pulley nose cover
1-S685.....Alt. Lock washer
3-S028.....8-32 x 1" SHCS
1-650-A.....Power steering pulley
3-S144.....5/16-18 x 7/8 SHCS
1-394-A.....A/C nose cover
3-S520.....M6 x 1.0 x 20mm
3-S124.....1/4-20 x 3/4 SHCS

Components

1-P412.....A/C Compressor
1-418-06.....A/C Manifold
2-S550.....M8 x 20mm SHCS
1-P555.....Alternator
1-P313.....Power steering pump
1-P126.....B.B. Chevy LWP

Photo-1

Install the two Rear Water pump Adapter brackets Drivers side (40761-C) & Passenger Side (40762-C) . Use two Factory hemi gaskets (S678) between the brackets and the block and secure with 4 (S248) 3/8 x 1" SHCS.

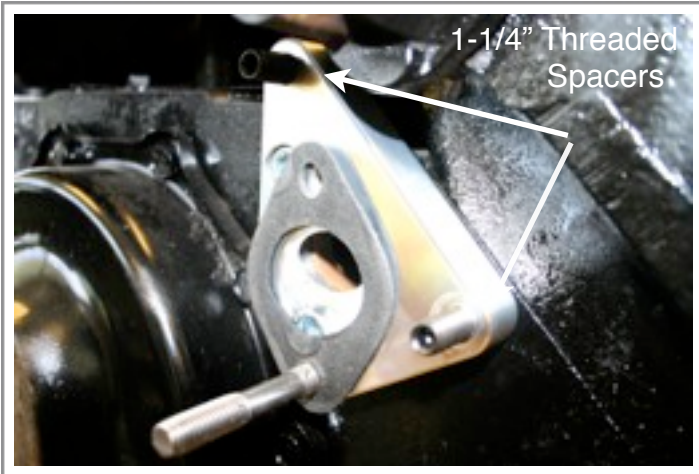
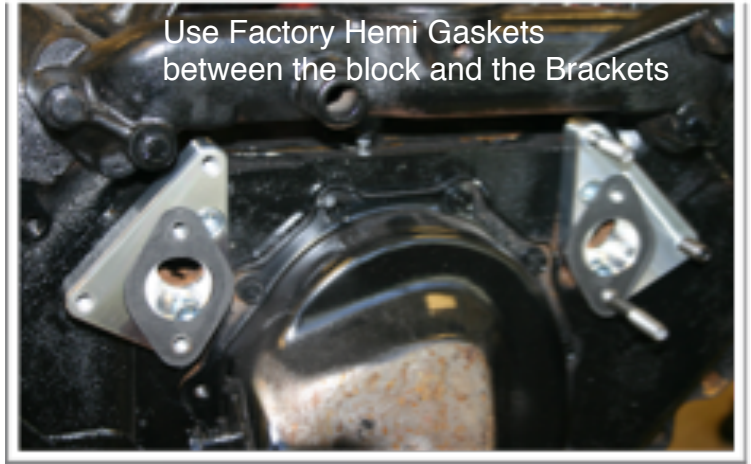


Photo-2

Insert Threaded Studs into the Drivers side Adapter Bracket (40761-C) Start with the (S345) 3/8 x 1-1/4" in the Upper and outer holes. In the lower hole install Stud (S339) 3/8 x 3" Now install the Chevy Water pump gasket (S676).



Photo-3

Insert the Studs into the passenger side Adapter (40762-C) Start with the (S345) 3/8 x 1-1/4" in the upper and outer holes. In the lower hole insert stud (S339) 3/8 x 3" Now install the chevy water pump gasket (S676).



Photo-4

Install the Water pump (P126) By sliding it over the two lower studs and secure the upper mounting holes with two 3/8 x 2-1/4" SHCS (S260).

Photo-5

Spacer Installation on the drivers side Adapter Bracket. Start by installing threaded Spacer (S791) 3.480 long On To the lower Stud. Then install two (S799) 5" long threaded spacers onto the upper and outer studs.

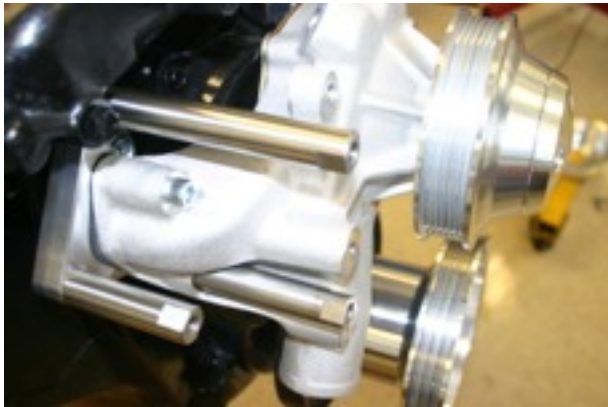


Photo-6

Spacer Installation on the Passenger side Adapter Bracket. Start with installing Spacer (S791) 3.480 onto the lower stud. Then install a (S799) 5" threaded spacer onto the upper stud. The outer stud will use a (S775) 2.720 Threaded Spacer.

Photo-7

Mount the main Alternator Bracket (40761-A) using two (S248) 3/8 x 1" SHCS in the upper and outer mounting holes. In the lower mounting hole install idler pulley (740-A) with a 3/8 x 2" hex bolt (S323) and a 3/8 x 3/4" washer (S666). Leave loose at this time to install the P/S or idler bracket.



Photo-8

Mount the Adjustable idler bracket (713) to the back side of the P/S bracket (40763-A). Non P/S kits will use (40764-A) Mount with two 1/4 x 3/4" SHCS from the front side of the bracket.

Photo-9

Mount the P/S or Idler bracket to the main Alternator bracket with two 3/8 x 1" SHCS (S248). On the back side of the outer mounting hole install a 2" Threaded spacer (S771).

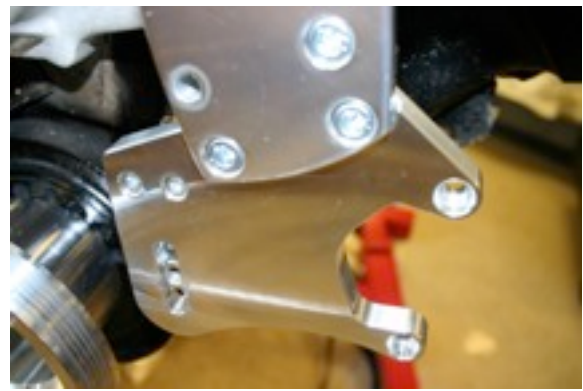


Photo-10

Attach the power steering pump (P313) to the bracket with two M8 x 25mm SHCS (S551). Now attach the (742-A) Idler Pulley to the (713) Adjustable idler with a 3/8 x 2" hex head (S323) and a 3/8 x 3/4 Washer (S666). Leave loose.

Photo-11

Attach the (40761-B) Rear Alternator support bracket to the back side of the 2" Threaded Spacer using a (S322) 3/8 x 1-1/2" hex bolt. now thread the (S450) 5/8 O.D. threaded Bushing into the rear support outer hole.



Photo-12

Mount the Alternator (P555) to the main bracket using a (S144) 5/16 x 7/8 SHCS in the upper hole. In the lower hole use a (S272) 3/8 x 3-3/4" SHCS thru the main bracket lower hole then the alternator & rear support bracket securing with a (S622) 3/8 lock nut. Make sure the (S450) threaded spacer is tight to the rear of the Alt. mounting ear.

Photo-13

Mount the main A/C Bracket (40762-A) to the threaded spacers. In the upper hole (A) use a 3/8 x 1" SHCS (S248). In the Lower Left mounting hole (B) install the A/C rear support bracket (40762-B) and a (TP3-1.800) Spacer in between the main bracket and threaded spacer. Secure with a (S268) 3/8 x 3-1/4" SHCS. In the lower hole (C) install a (740-A) Idler pulley to the front of the bracket with a 3/8 x 2" Hex bolt (S323) and a 3/8 x 3/4" Washer (S666).

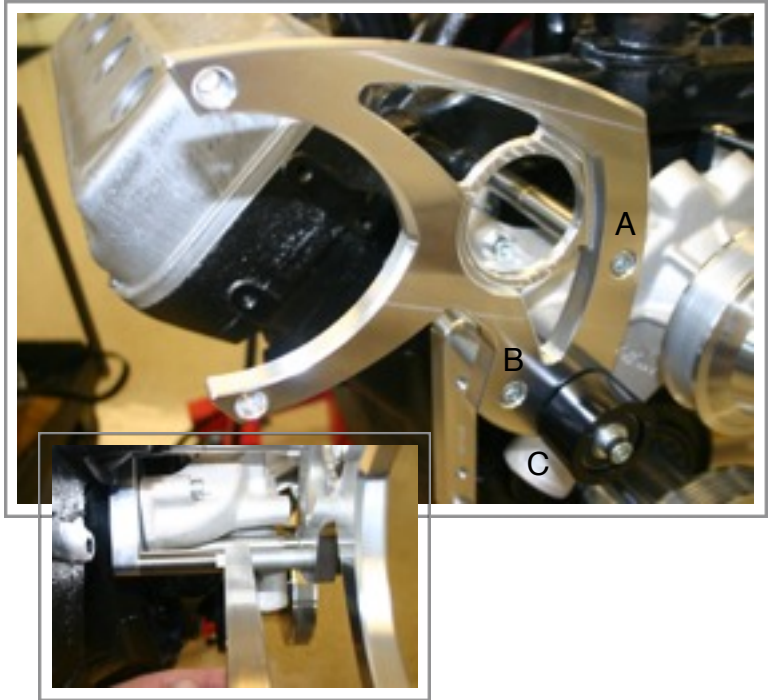


Photo-14

Install a 5/8 x 1-1/8 Threaded spacer (S450) into the outer hole of the rear support Bracket. Now install the A/C Unit (P412) with two M8 x 20mm SHCS (S550) to the front of the main bracket. Use the Threaded spacer to take up any gap in the rear support and insert a 5/16 x 2-1/4" Hex bolt (S217) and a 5/16 lock nut (S616).

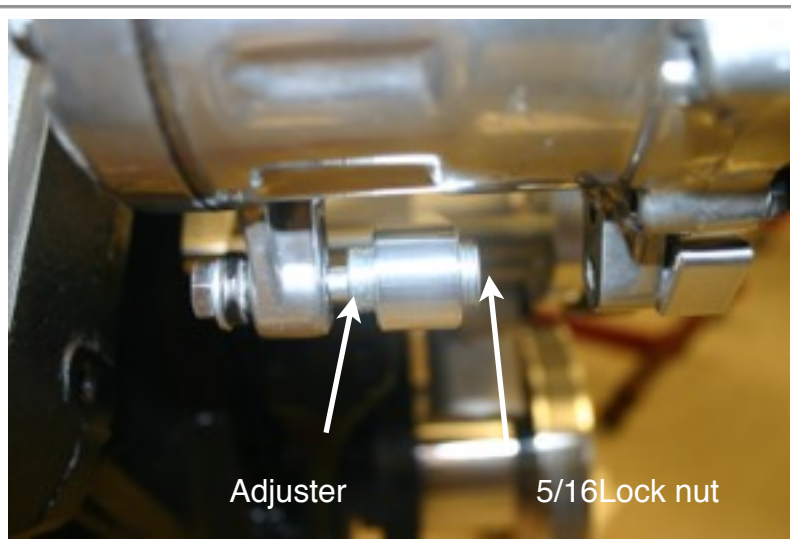


Photo-15

Install the A/C cover (394-A) with either three 1/4 x 3/4 Button heads (S124) or three M6 x 20mm Button heads (S520). Depending on your clutch thread pitch.

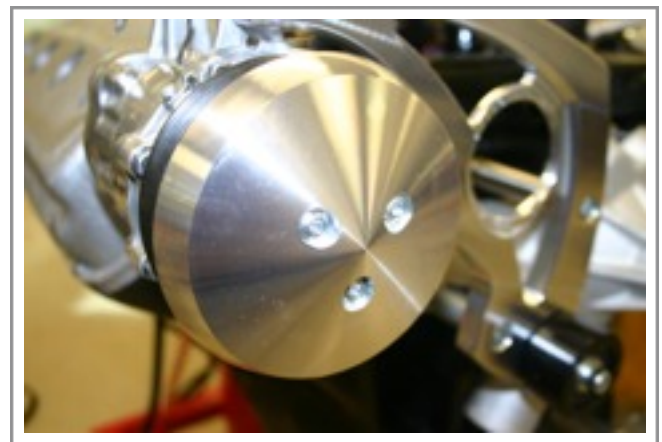


Photo-16

Install your power steering pulley (650-A) with three 5/16 x 7/8 SHCS (144)

Photo-17

Install the crank pulley (10381-A) using six 5/16 x 7/8 SHCS (S144).

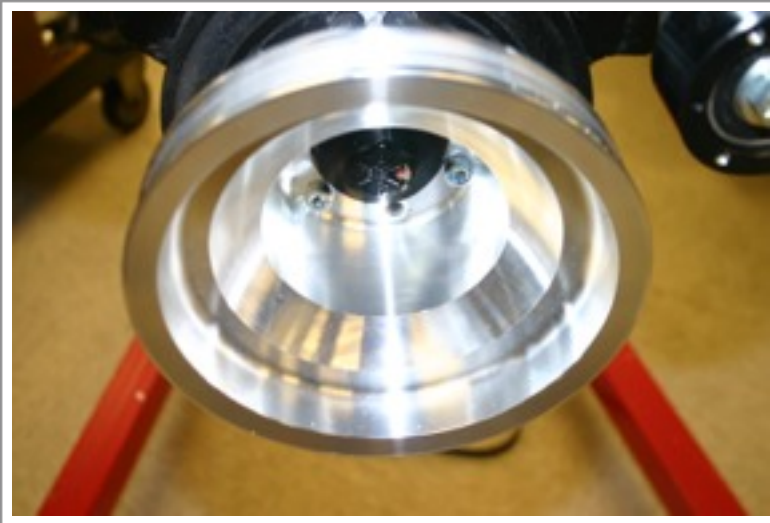


Photo-18

On the Alternator install the Alt. fan (221-A) the (206-A) Pulley securing with the (S685) lock washer and nut. Impact to 90 LBS. Now install the Alt. nose cover (306-A) with three 8-32 x 1" SHCS (S028)

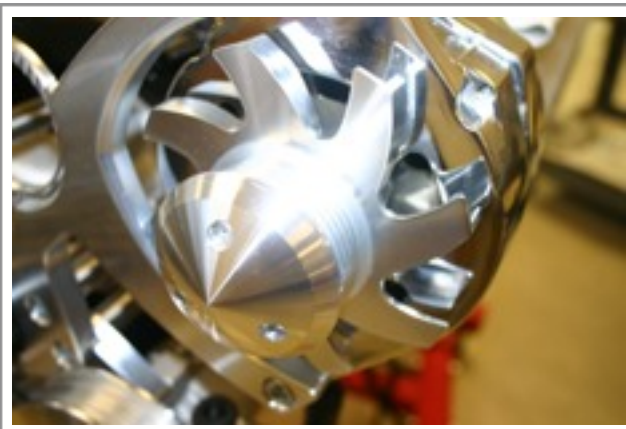


Photo-19

Install the water pump pulley (10383-A) and the W/P nose cover (314-A) using four 5/16-24 x 5/8 SHCS (S183). If using a standard fan do not use the nose cover.

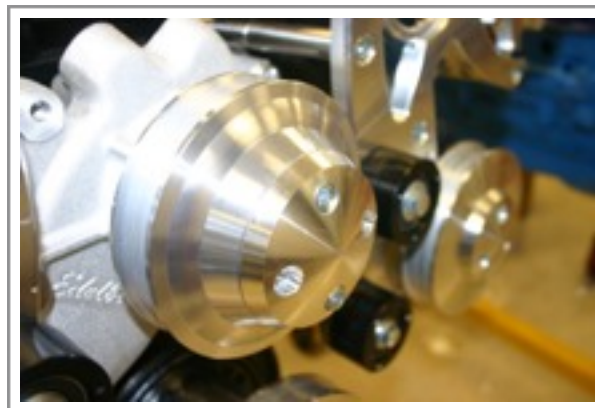


Photo-20

Install the belt P/S kit uses a 91-1/2" Belt Non P/S will use a 87" Belt. With the Adjustable idler loose and in the Full down position, use a 9/16 Socket and Extension bring the idler up to create 100 Lbs of tension on the belt. Next tighten the idler mounting bolt. Now install the three Idler nose covers (307-A) using three each 8-32 x 3/8 SHCS. (S022) . Now add the A/C manifold (418-06) to the A/C unit. Use two M8 x 20mm SHCS. (Do not install or engage the A/C until your ready to charge the Unit.



LIMITED WARRANTY

March Performance warrants to the original retail purchaser that for a period of ninety (90) days from the date of purchase, March Performance will repair or replace, at their option, any Product, which is found to be defective in material or workmanship.

Exclusions from Warranty Coverage

March Performance does not warrant any Product that is damaged from abuse, misuse or misapplication or not used for its intended purposes.

This Limited Warranty does not cover or apply to any damage or loss sustained to the engine or any other parts which may have been caused by the defective Product and does not cover or apply to any personal injury, labor charges or any other incidental costs for damages caused by the defective Product. THIS IS THE ONLY EXPRESS WARRANTY GIVEN WITH RESPECT TO YOUR PRODUCT. ALL OTHER EXPRESS WARRANTIES, GUARANTEES, OR STATEMENTS REGARDING THE PRODUCT, WHETHER WRITTEN OR VERBAL, ARE HEREBY DEEMED NULL AND VOID AND OF NO EFFECT.

Normal wear and tear and damage to the Product not caused by March Performance are also excluded from this Warranty.

DISCLAIMER OF OTHER WARRANTIES

EXCEPT TO THE EXTENT PROHIBITED BY APPLICABLE LAW, ANY IMPLIED WARRANTY WHETHER OF MERCHANTABILITY, FITNESS FOR A PARTICULAR PURPOSE, OR WARRANTY, SOME STATES DO NOT ALLOW LIMITATIONS ON HOW LONG AN IMPLIED WARRANTY WILL LAST SO THAT THE PRECEDING LIMITATION MAY NOT APPLY TO YOU.

Limitation on Remedies

REPAIR OR REPLACEMENT AS PROVIDED IN THIS WARRANTY IS YOUR EXCLUSIVE REMEDY. MARCH PERFORMANCE SHALL NOT BE LIABLE FOR ANY INCIDENTAL OR CONSEQUENTIAL DAMAGE FOR BREACH OF ANY EXPRESS OR IMPLIED WARRANTY ON THE PRODUCT. SOME STATES DO NOT ALLOW THE EXCLUSION OR LIMITATION OF INCIDENTAL OF CONSEQUENTIAL DAMAGES SO THE PROCEEDING LIMITATIO OR EXCLUSIONS MAY NOT APPLY TO YOU. YOU HAVE NO RECOURSE OR REMEDY FOR DAMAGE OR DEFECT CAUSED BY MISUSE, ABUSE OR NEGLIGENCE.

THIS WARRANTY GIVES YOU SPECIFIC RIGHTS AND YOU MAY ALSO HAVE OTHER RIGHTS, WHICH MAY VARY FROM STATE TO STATE.

Your Responsibilities:

- 1. Use and install the Product only for its intended purpose.
2. To avail yourself of this Limited Warranty, return the Product with a copy of the paid receipt, postage paid to: MARCH PERFORMANCE 16160 PERFORMANCE WAY NAPLES, FL 34110
3. When returning the Product, you must follow the directions set forth on the Warranty/Return Form on the reverse side of this Limited Warranty. If you no longer have the Warranty/Return Form, one may be obtained by contacting March Performance during normal business hours at: (888) 729-9070.
4. Shipping and/or transportation costs returning the Product to March Performance and any damage caused during shipping are your responsibility. March Performance will pay for shipping and/or transportation costs incurred in returning the Product to you.

LIMITED WARRANTY WARRANTY/RETURNS FORM

No product mounted is considered for credit unless it is a manufacturer defect.

All products returned for any reason must reference an authorization number (RGA). The RGA number is obtained by calling place of purchase during normal business hours. Any product returned without the RGA# written on the return package next to the return shipping label will be refused.

All returns must ship via UPS and be properly packaged in the original carton. Return freight charges are the responsibility of the customer unless the product was shipped in error.

March product returned after (1) year from date of purchase will not be accepted unless it is found to be a manufacturer defect. The customer must include a written statement describing the alleged product defect. The complete Limited Warranty is set forth on the reverse side.

- 100% credit issued on manufacturer defects
20% return fee on all reshelvable product
30% return fee on all repairable product

NO CREDIT WILL BE ISSUED ON RETURNED PRODUCT BEYOND REPAIR

March Performance thoroughly inspects all returns. It is the sole discretion of March Performance in determining the condition of all returned merchandise.

To receive replacements at no charge the original product must first be received and inspected by March Performance for determination. Immediate replacements may be purchased and later credited upon inspection determination.

Please Complete the Information below, detach and include with returned product.

Form fields for RGA#, CT#, Issued by, Date, Purchaser's Name, Phone, Address, Purchased Directly Through, Invoice#, Product ID, Invoice Date, Reason.

** MOUNTED PRODUCTS ARE NONREFUNDABLE **